

E58AM GREEN LINE VR - Electromagnetic Speed Sensor

Housing: 5/8" Connector: MS 3102A-10SL

GREEN LINE
STANDARD SPEED SENSORS

P/N: 385Z-05360

Signal output:

The signal frequency is proportional to the target speed. The signal amplitude is defined with a load of 100 kOhms and affected by the air gap, the target geometry and material.

Operating temperature:

-20....+ 100 °C

Frequency range:

10 Hz...20kHz

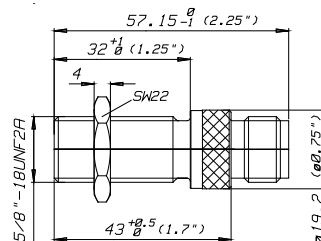
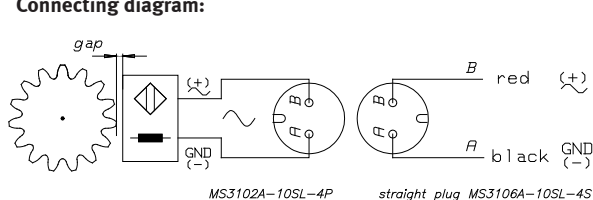
Connector:

MS 3102A-10SL 2 pin connector

Installation:

The sensor wires must be laid as far as possible from electrical motors, relays, solenoids etc. and must not be run parallel with power cables. The maximum recommended cable length is 20 meters (65 feet). Using radial or axial mounting, the sensor should be mounted with the center of the sensor face over the center of the gear teeth or targets. Using radial sensor mounting, some axial movement is permissible when using a sufficiently thick target. **A solid and vibration free mounting of the sensor is important.**

Connecting diagram:



JAUQUET
TECHNOLOGY GROUP

For complete operating
instructions please visit our
website [www.jaquet.com/
greenline](http://www.jaquet.com/greenline)

IN CHARGE OF SPEED